

## Questionnaire Respondent Management

### Summary

This provides questionnaire template management function used in establishing the questionnaire management system which manages design templates used in questionnaire participation.

### Description

#### Package Dependency

The Questionnaire respondent management package has direct functional dependency to the common package (cmm) of element technology and authorization management package. However, to avoid error on deployment, the distribution file contains questionnaire, questionnaire management, questionnaire template management, questionnaire question management, questionnaire item management, and calendar package to dependencies between packages.

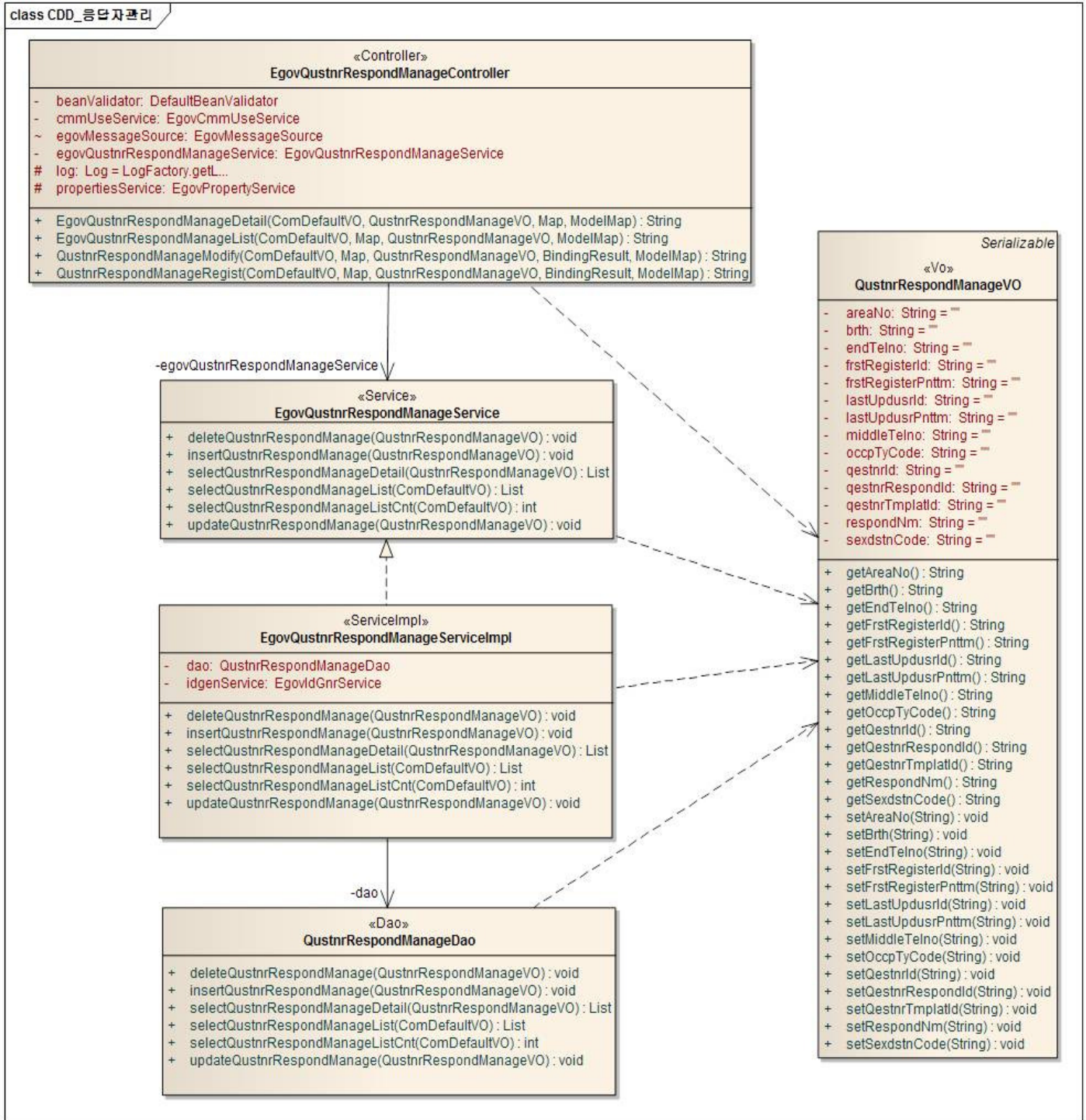
- Package Dependency: [User Support Package Dependency](#)

#### Related Source

Type	Source	Remarks
Controller	egovframework.com.uss.olp.qrm.web.EgovQustnrRespondManageController.java	Controller class for respondent management
Service	egovframework.com.uss.olp.qrm.service.EgovQustnrRespondManageService.java	Service interface for respondent management
ServiceImpl	egovframework.com.uss.olp.qrm.service.impl.EgovQustnrRespondManageServiceImpl.java	ServiceImpl Class for respondent management
VO	egovframework.com.uss.olp.qrm.service.QustnrRespondManageVO.java	VO Class
VO	egovframework.com.cmm.ComDefaultVO.java	Search VO Class
DAO	egovframework.com.uss.olp.qrm.service.impl.QustnrRespondManageDao.java	Dao class respondent management
JSP	/WEB-INF/jsp/egovframework/com/uss/olp/qrm/EgovQustnrRespondManageList.jsp	List inquiry page for respondent management
JSP	/WEB-INF/jsp/egovframework/com/uss/olp/qrm/EgovQustnrRespondManageRegist.jsp	List page for respondent management
JSP	/WEB-INF/jsp/egovframework/com/uss/olp/qrm/EgovQustnrRespondManageModify.jsp	Registration page for respondent management
JSP	/WEB-INF/jsp/egovframework/com/uss/olp/qrm/EgovQustnrRespondManageDetail.jsp	Update page for respondent management
QUERY XML	resources/egovframework/sqlmap/com/uss/olp/qrm/EgovQustnrRespondManage_SQL_Mysql.xml	Detailed inquiry page for respondent management respondent management
QUERY XML	resources/egovframework/sqlmap/com/uss/olp/qrm/EgovQustnrRespondManage_SQL_Oracle.xml	MySQL based QUERY XML for respondent management
QUERY XML	resources/egovframework/sqlmap/com/uss/olp/qrm/EgovQustnrRespondManage_SQL_Tibero.xml	Oracle based QUERY XML for respondent management
QUERY XML	resources/egovframework/sqlmap/com/uss/olp/qrm/EgovQustnrRespondManage_SQL_Altibase.xml	Tibero based QUERY XML for respondent management
Validator	resources/egovframework/validator/validator-rules.xml	Altibase based

Rule XML		QUERY XML for respondent management
Validator XML	resources/egovframework/validator/com/uss/olp/qrm/EgovQustnrRespondManage.xml	XML that defined the validator rule
Message properties	resources/egovframework/message/com/message-common_ko_KR.properties	Validator XML for respondent management
Idgen XML	resources/egovframework/spring/context-idgen.xml	Message properties for respondent management

## Class Diagram



## ID Generation

### ID Generation related DDL and DML

- To utilize ID Generation Service, **QESTNR\_RPD\_ID** is added to the Sequence storage table, COMTECOPSEQ.
- To use ID Generation Service, **QESTNR\_RPD\_ID** should be added to the sequence storage table, COMTECOPSEQ.

```
CREATE TABLE COMTECOPSEQ (
    table_name varchar(16) NOT NULL,
    next_id DECIMAL(30) NOT NULL,
    PRIMARY KEY (table_name));
```

```
INSERT INTO COMTECOPSEQ VALUES('QESTNR_RPD_ID','0');
```

### ID Generation Configuration (context-idgen.xml)

```
<bean name="qustnrRespondManageIdGnrService"
    class="egovframework.rte.fdl.idgnr.impl.EgovTableIdGnrService"
    destroy-method="destroy">
    <property name="dataSource" ref="egov.dataSource" />
    <property name="strategy" ref="QustnrRespondManageInfotstrategy" />
    <property name="blockSize" value="10"/>
    <property name="table" value="COMTECOPSEQ"/>
    <property name="tableName" value="QESTNR_RPD_ID"/>
</bean>
<bean name="QustnrRespondManageInfotstrategy"
    class="egovframework.rte.fdl.idgnr.impl.strategy.EgovIdGnrStrategyImpl">
    <property name="prefix" value="QRPD_" />
    <property name="cipers" value="15" />
    <property name="fillChar" value="0" />
</bean>
```

### Related Table

Table name	Table name(English)	Note
Questionnaire management	COMTNQESTNRINFO	Lists questionnaire management.
Questionnaire respondent information	COMTNQUSTNRRESPONDINFO	Manages questionnaire respondent information.

### Related Code

Following table lists codes and their configurations used in respondent information.

Code Type	Code Type Name	Code ID	Code Name
COM014	Gender code	M	Feature description
COM014	Gender code	F	Process description
COM034	Task type code	1	Student
COM034	Task type code	2	University student
COM034	Task type code	3	Soldier
COM034	Task type code	4	Teacher
COM034	Task type code	5	Etc

### Related Function

The questionnaire management function is composed of **Questionnaire respondent management list inquiry, questionnaire template register, questionnaire template update, detailed questionnaire template inquiry.**

### Questionnaire respondent management list inquiry

#### Business Rule

The manager can inquire information on the pre-registered Questionnaire respondent management as a list and move to registration screen by clicking the register button.

#### Related Codes

N/A

### Screen and execution manual

Action	URL	Controller method	QueryID
--------	-----	-------------------	---------

List Inquiry	/uss/olp/qrm/EgovQustnrRespondManageList.do	egovQustnrRespondManageList	"QustnrRespondManage.selectQustnrRespondManage",
			"QustnrRespondManage.selectQustnrRespondManageCnt"

Respondent information list is accessed 10 items per page, paging occurs per 10 pages. Search options are applied to author and questionnaire item.

To change search range per page, update pageUnit, pageSize in context-properties.xml file.(This setting will be applied to the whole common service)

응답자정보 목록

--선택하세요--

조회

등록

순번	설문지정보(제목)	응답자명	전화번호	등록일자
1	인플레이션 관련 국민 기초 수급 조사	장동한	박상수	2009-04-28
2	대한민국 여성가수 인기도 조사	박상수	박상수	2009-04-23
3	대한민국 여성가수 인기도 조사	익명	박상수	2009-04-22
4	대한민국 여성가수 인기도 조사	천재		2009-04-16
5	소녀시대와 원더걸스의 인기도 조사	박상수	박상수	2009-04-15
6	소녀시대와 원더걸스의 인기도 조사	박상수	박상수	2009-04-15
7	소녀시대와 원더걸스의 인기도 조사	조재영	조재영	2009-04-10
8	소녀시대와 원더걸스의 인기도 조사	장동건1111		2009-04-09
9	소녀시대와 원더걸스의 인기도 조사	이종호	조재영	2009-04-09
10	소녀시대와 원더걸스의 인기도 조사	박정규1	조재영	2009-04-09

1 2 3 4

Search: select search options and enter search text to search specific items.

Register: click register button to register respondent in **Respondent information registration** page.

Click the List: displays **Detailed inquiry of respondent information** page.

## Respondent management registration

### Business Rule

This stores the basic information of the Respondent management. The red star (\*) on the right shows the mandatory item.

### Related Codes

N/A

### Screen and execution manual

#### 1. Respondent information registration

Action	URL	Controller method	QueryID
Register	/uss/olp/qrm/EgovQustnrRespondManageRegister.do	qustnrRespondManageRegist	"QustnrRespondManage.insertQustnrRespondManage"

응답자정보 등록

설문지정보 *	인플레이션 관련 국민 기초 수급 조사
성별 *	남자
직업 *	선택
생년월일 *	1980년 01월 01일
응답자명 *	장동한
전화번호 *	010 - 9024 - 6811

목록

저장

List: displays **Respondent information list** page.  
 Save: stores new respondent with input data.  
 Questionnaire information: opens questionnaire information popup.

## 2. Questionnaire information registration popup

설문관리 목록 --선택하세요--

번호	설문제목	설문기간	등록자	등록일자	
1	인플레이션 관련 국민 기초 수급 조사	2009-05-01~2009-04-30	박상수	2009-04-28	선택
2	친환경 설문지 관리	2009-04-01~2009-04-10	박상수	2009-04-23	선택
3	대한민국 여성가수 인기도 조사	2009-04-16~2009-04-30	박상수	2009-04-16	선택
4	소녀시대와 원더걸스의 인기도 조사	2009-04-09~2009-04-09	업무담당자	2009-04-09	선택
5	3.1절 특집 대한민국 애국심 조사	2009-04-01~2009-04-24	조재영	2009-04-03	선택
6	개인위생 관련 설문 조사	2010-01-04~2009-03-11	조재영	2009-04-02	선택
7	화생방 훈련 설문조사	2009-04-06~2009-04-23	조재영	2009-04-02	선택
8	<b>봄맞이 설문조사</b>	2008-01-01~2008-01-30	조재영	2009-03-30	선택
9	웰빙관련 설문조사	2008-01-01~2008-01-30	조재영	2009-03-18	선택
10	국민 기초질서 관련 설문조사	2009-04-06~2009-04-18	조재영		선택

1

Select: auto-fill selected questionnaire information.

## Respondent management update

### Business rule

This stores the basic information of the Respondent management. The red star (\*) on the right of the type shows the mandatory item.

### Related Code

N/A

### Screen and execution manual

Action	URL	Controller method	QueryID
Update	/uss/olp/qrm/EgovQustnrRespondManageModify.do	qustnrRespondManageModify	"QustnrRespondManage.updateQustnrRespondManag"

### 응답자정보 수정

설문관리정보 *	인플레이션 관련 국민 기초 수급 조사
성별 *	<input type="text" value="남자"/>
직업 *	<input type="text" value="학생"/>
생년월일 *	<input type="text" value="1980"/> 년 <input type="text" value="01"/> 월 <input type="text" value="01"/> 일
응답자명 *	<input type="text" value="장동한"/>
전화번호 *	<input type="text" value="010"/> - <input type="text" value="9024"/> - <input type="text" value="6811"/>

Update: Updates respondent with modified data.  
 List: displays **Respondent information** page.

## Detailed inquiry of Respondent management list

### Business rule

This is the screen by clicking the list from the Respondent management list which shows detailed information on the Respondent management.

## Related codes

N/A

## Screen and execution manual

Action	URL	Controller method	QueryID
Detailed inquiry	/uss/olp/qrm/EgovQustnrRespondManageDetail.do	egovQustnrRespondManageDetail	“QustnrRespondManage.selectQustnrRespondManageDetail”
Delete	/uss/olp/qrm/EgovQustnrRespondManageDetail.do	egovQustnrRespondManageDetail	“QustnrRespondManage.deleteQustnrRespondManage”

### 응답자정보 상세보기

설문관리정보 *	인플레이션 관련 국민 기초 수급 조사
성별 *	남자
직업 *	학생
생년월일 *	1980- 01- 01
응답자명 *	장동한
전화번호 *	010-9024-6811

목록 삭제 수정

Update: displays **Respondent update** page.

Delete: alerts delete confirm message, and allows deletion of respondents.

List: displays **Respondent information** page.